



# Linkstyle

Linkstyle Matrix II Smart  
Key Lock Box Manual

Scan the QR code below for an updated digital manual, more details, guides, FAQs, and other product resources for this device



<https://linkstyle.life/mx2h>

If you need any support, do not hesitate to reach out to us at:

email: [support@linkstyle.life](mailto:support@linkstyle.life)  
voicemail: 1-888-419-4888

# Index

A. Notice Before Use.....	4
B. Product Overview.....	6
C. Setup & Installation.....	9
D. Operating Instructions.....	26
E. Technical Specifications.....	30
F. Warranty & Support.....	31

## A. Notice Before Use

- The physical keys included with this device are the most important and reliable backup method for opening the key box. DO NOT lose them and DO NOT lock them inside the key box.
- Test the physical keys before using the key box to ensure they work properly.
- When setting up this device with a Nexohub gateway, keep this device, the gateway, and the Wi-Fi router all within close proximity during the setup process. See Page 14 for guidelines regarding effective wireless range.









## A. Notice Before Use

The Matrix II Smart Key Lock Box can be used in one of two ways, with or without a Bluetooth hub (Linkstyle Nexohub).

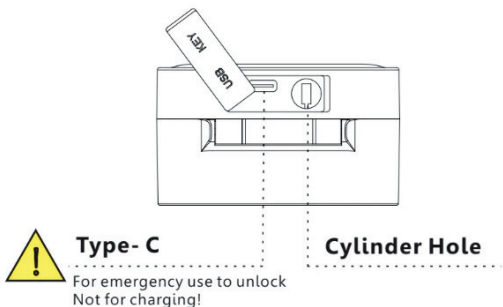
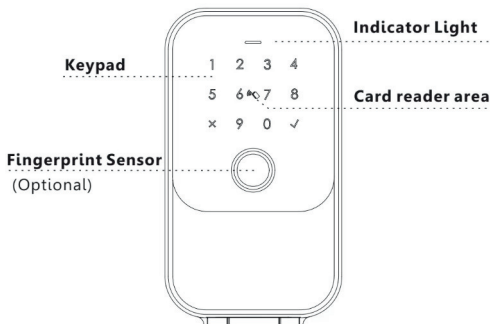
- **Without Hub:** connect **directly to your phone**, operate and configure the lock box within **short distance**.
- **With Hub:** connect to your **Wi-Fi network** using the hub, operate and configure the lock box **remotely over the internet**

If you are using the lock box with the Nexohub, please be sure to set up the Nexohub first then set up the lock box.

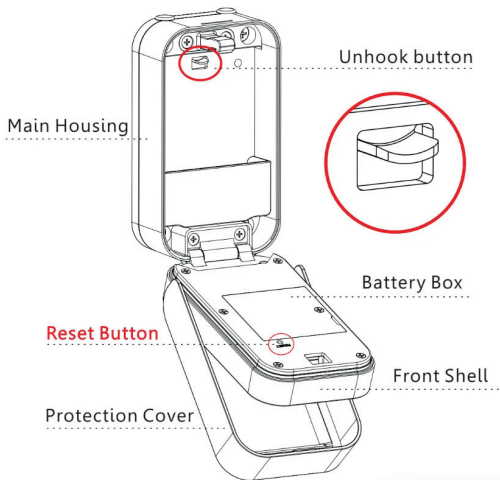
## B. Product Overview

<p><b>a</b></p>  <p>1 Pcs Keybox</p>	<p><b>b</b></p>  <p>2 Pcs Manual Key</p>	<p><b>c</b></p>  <p>4 Pcs(D4X30mm) Wood screw</p>	<p><b>d</b></p>  <p>4Pcs(D6X30mm) Expansion Plug</p>
<p><b>e</b></p>  <p>2 Pcs Epoxy Card</p>	<p><b>f</b></p>  <p>1 Pcs Manual</p>	<p><b>g</b></p>  <p>1 Pcs USB Cable (TYPE-C)</p>	<p><b>h</b></p>  <p>1 Pcs Shackle</p>

## B. Product Overview (Continued)



## B. Product Overview (Continued)





## C. Setup & Installation

### Install the Linkstyle app

Scan the QR code below to download and install the Linkstyle app. Register a new account on the app if you do not have one.



\*Alternatively, you can also search for “Linkstyle” on the Apple App Store or Google Play Store to find the app.

## C. Setup & Installation (Continued)

### \*\*\*Important Note:

When registering an account in the Linkstyle app, be sure to set the region to United States of America.



### Register

United States of America ▼

Email Address

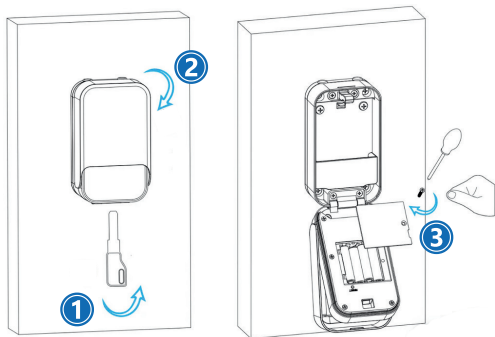
☐ I Agree [Privacy Policy](#) and [User Agreement](#)

Get Verification Code

## C. Setup & Installation (Continued)

### Prepare device for setup

Open the key box, then open the battery compartment and install 4 x AAA batteries.



## C. Setup & Installation (Continued)

### **Add device to Linkstyle app**

After installing the batteries for the first time, the device will be in setup mode by default.

To confirm, touch the keypad to wake it up and you should hear the voice prompt "Please pair device".

If you do not hear the voice prompt, refer to page 18 to reset the device to factory settings.

## C. Setup & Installation (Continued)

### **Add device to Linkstyle app**

If you are adding the device to the Linkstyle app directly via Bluetooth without a Nexohub, follow the steps starting on page 13.

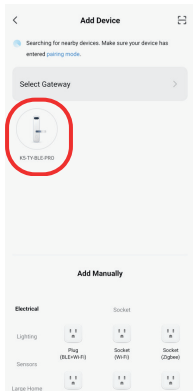
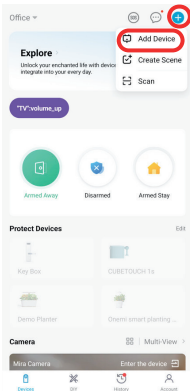
If you are adding the device to the Linkstyle app through a Nexohub gateway, follow the steps starting on page 14.

## C. Setup & Installation (Continued)

### Add device to Linkstyle app - Bluetooth

Step 1: In the Devices page of the Linkstyle app, tap the “+” button on the top right corner and tap “Add Device”

Step 2: The app will automatically scan for devices nearby in setup mode. Once the the device is found, tap its icon and follow the on-screen instructions to complete setup.



## C. Setup & Installation (Continued)

### Add device to Linkstyle app - Nexohub

#### **Important Note:**

Keep the Nexohub gateway, Matrix II lock box, and the 2.4GHz Wi-Fi router all within close proximity during the setup process.

You can relocate the gateway and lock box after setup for regular use following these guidelines:

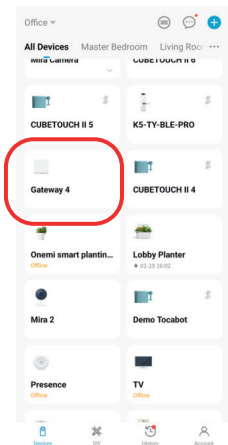
- Keep the gateway within effective Wi-Fi range of the Wi-Fi router.
- Keep the lock box within:
  - 15 feet of the gateway if there are no obstructions between them
  - 10 feet of the gateway if there is 1 door or interior wall between them
- Effective range is affected by obstructions and other wireless signals, and may vary based on individual usage conditions.

## C. Setup & Installation (Continued)

### Add device to Linkstyle app - Nexohub

Make sure to have a Nexohub added to your Linkstyle app and online before adding this device.

Step 1: In the Devices page of the Linkstyle app, find and tap the Nexohub.

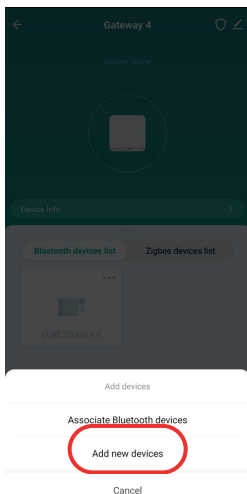
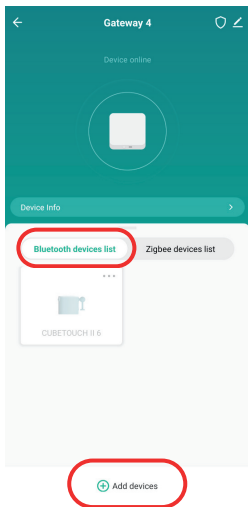




## C. Setup & Installation (Continued)

### Add device to Linkstyle app - Nexohub

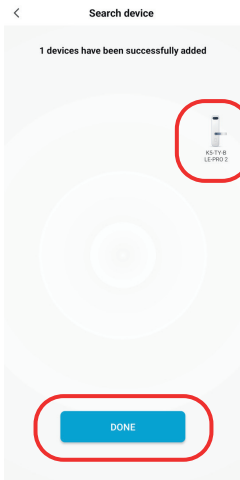
Step 2: Make sure the “Bluetooth devices list” is selected, and tap “Add devices”, then “Add new devices”



## C. Setup & Installation (Continued)

### Add device to Linkstyle app - Nexohub

Step 3: The app will automatically scan for devices nearby in setup mode. Once the device is found, tap “Done” and follow the on-screen instructions to complete setup.

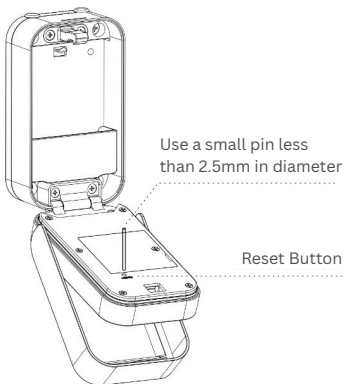


## C. Setup & Installation (Continued)

### **Reset the device to factory settings**

If you need to reset the device to factory settings, follow these steps:

Step 1: open the key box, then press and hold the reset button for 5 seconds, until you hear the voice prompt "Please enter the initialization password".



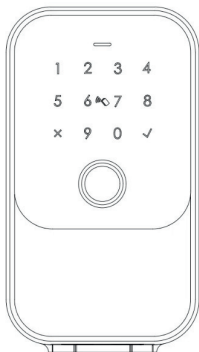
## C. Setup & Installation (Continued)

### Reset the device to factory settings

Step 2: Enter the **initialization password:**

**000** on the keypad then press (check mark).  
You will hear the voice prompt "Operation successful".

The device is now reset to factory settings in setup mode and the unlock password is reset to 123456.



Device in factory settings:  
Press 123456 then  
(check mark) to unlock

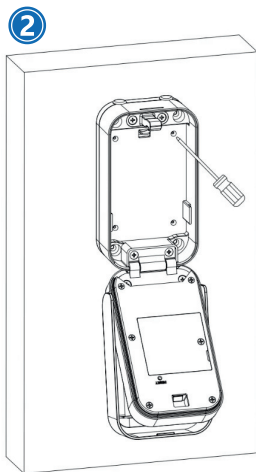
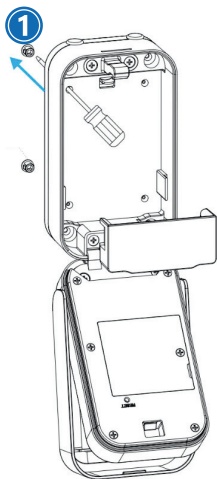


## C. Setup & Installation (Continued)

### Mount Device to Wall (Optional)

Step 1: Poke out the screw plugs

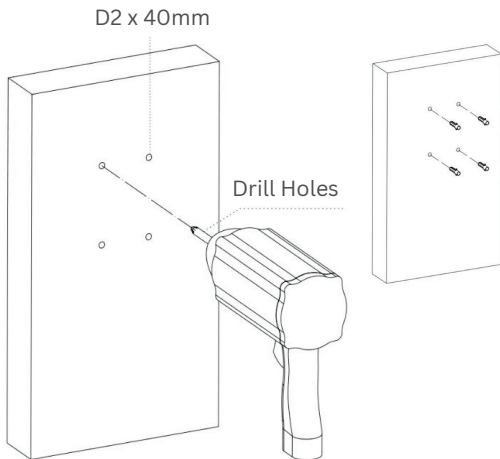
Step 2: Plan where to drill holes using the screw holes as a template



## C. Setup & Installation (Continued)

### Mount Device to Wall (Optional)

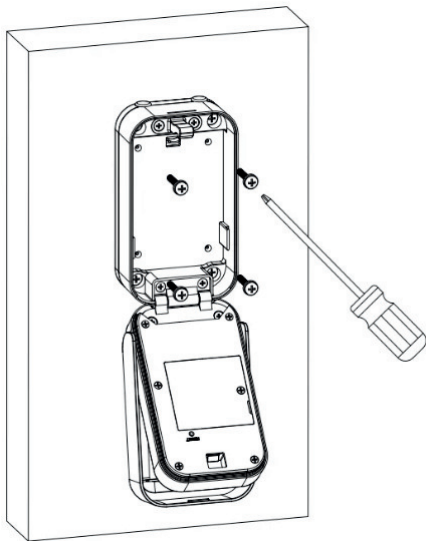
Step 3: Drill holes (D2 x 40mm) for screws.  
Install anchors if necessary



## C. Setup & Installation (Continued)

### Mount Device to Wall (Optional)

Step 4: Install screws

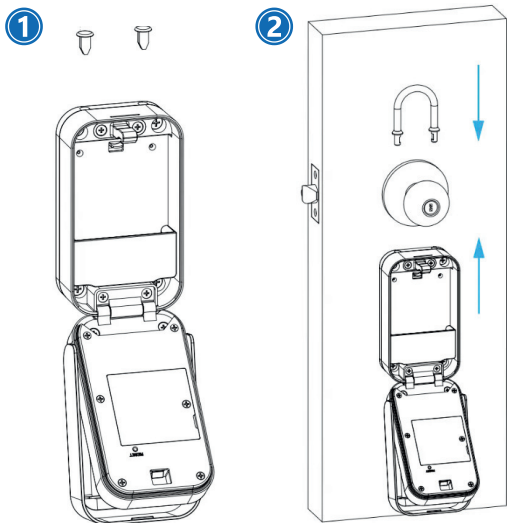


## C. Setup & Installation (Continued)

### Hang Device with Shackle (Optional)

Step 1: Remove rubber weatherproofing plugs

Step 2: Click shackle into main body

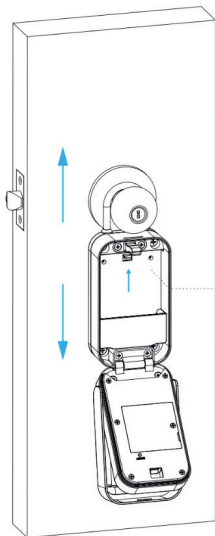




## C. Setup & Installation (Continued)

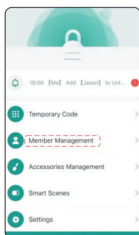
### Hang Device with Shackle (Optional)

To unlock shackle, push the the Unhook button up and pull shackle out.

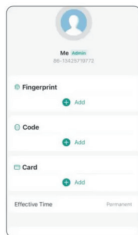
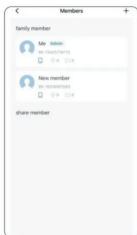


## D. Operating Instructions

### Add User Fingerprint



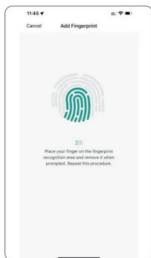
Step 1: Select Member



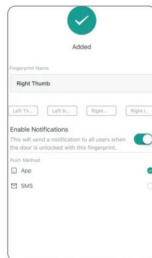
Step 2: Tap Add under Fingerprint



Step 3: Start Capturing



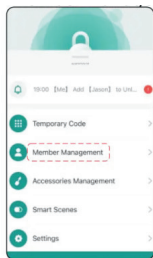
Step 4: Press finger 5 times



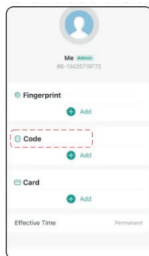
Step 5: Label the finger print

## D. Operating Instructions (Continued)

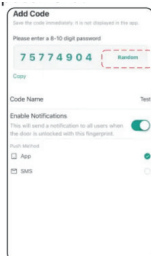
### Add User Password



Step 1: Select Member



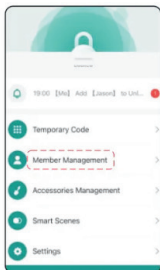
Step 2: Tap Add under Code



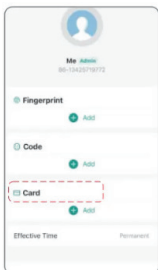
Step 3: Tap Random or enter a custom code

## D. Operating Instructions (Continued)

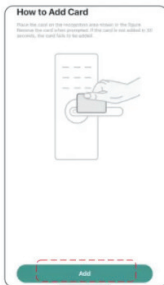
### Add User Card



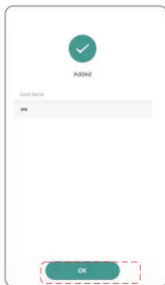
Step 1: Select Member



Step 2: Tap Add under Card



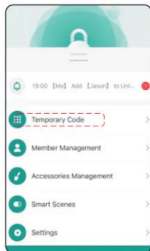
Step 3: Tap card to device center



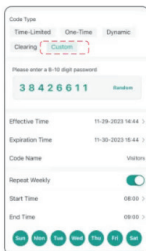
Step 3: Name card and save

## D. Operating Instructions (Continued)

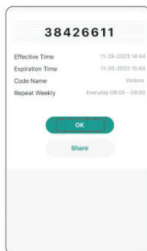
### Add Temporary Code



Step 1: Tap  
Temporary Code



Step 2: Select  
code type and set  
parameters



Step 3: Confirm  
and save

## E. Technical Specifications

Main material	Aluminum Alloy,Zinc alloy,Tempred glass
Available Color	Black
way to install	Wall mounting(main)
Communication	BLE5.0
Support OS	iOS 7.0 or above, Android 4.3 or above
Battery Life	7000 times normal unlock(10-12 months)
Power Supply	DC6V:4pcs AAA alkaline batteries
Static Current	≤65uA
Dynamic Current	≤180mA
Unlock Way	APP,Passcode,Card,Manual key,Fingerprint(optional)
Unlock Time	1~1.5 seconds
Working Temperature	-20~55 degree
Working Humidity	10%~95%
Factory Password	Factory master password:123456, after configuration,it will be invalid
Virtual Password	Available
IP Level	IP65 Certificated
User Capacity	Number of Fingerprints, Passwords and Cards: 200

## F. Warranty & Support

Thank you for choosing Linkstyle. We are dedicated to providing innovative and convenient products for an enhanced lifestyle. This Product Warranty Agreement ("Warranty") applies to items purchased directly from Linkstyle.

### **Warranty Duration:**

All products sold by Linkstyle come with a standard one (1) year warranty from the date of purchase, unless stated otherwise.

### **Warranty Coverage:**

During the warranty duration, Linkstyle assures that the product will be free from defects in materials and workmanship when used under regular conditions.

### **Exclusions:**

This Warranty does not cover the following:

- Damages due to misuse, neglect, or deviation from user instructions.
- Damages from natural disasters such as floods, fires, or accidents.
- Unauthorized repairs, modifications, or disassembling.
- Cosmetic damages like scratches, dents, or broken parts.

## F. Warranty & Support (Continued)

### **Filing a Warranty Claim:**

- Reach out to Linkstyle Customer Support providing your proof of purchase, product details, and a comprehensive description of the issue.
- Our team will evaluate the claim and, if required, provide return shipping instructions.
- If the product is confirmed defective, Linkstyle, at its discretion, will repair or replace the item.

### **Limitation of Liability:**

Linkstyle's liability is strictly limited to the repair or replacement of the product. Under no circumstances will Linkstyle be liable for any indirect, incidental, or consequential damages. The total liability shall not exceed the original purchase price of the product.

### **Warranty Transferability:**

This Warranty is solely for the original purchaser and cannot be transferred.

### **Governing Law:**

This Warranty is governed by the laws of the country/state of purchase.

### **Disclaimer:**

Apart from what's stated here, no other express or implied warranties apply, including implied warranties of merchantability or suitability for a specific purpose.

For any queries or concerns regarding our products or this Warranty, reach out to us at [support@linkstyle.life](mailto:support@linkstyle.life).



Apple and Apple logos are trademarks of Apple, Inc., registered in the U.S. and other countries. App Store is a service mark of Apple, Inc.

Amazon, Alexa, and all related logos are trademarks of Amazon.com Inc. or its affiliates.

Google and Google Play are trademarks of Google LLC.

Other third-party brands and names are the property of their respective owners.

# Linkstyle.life

Unlock the enchanted life!

